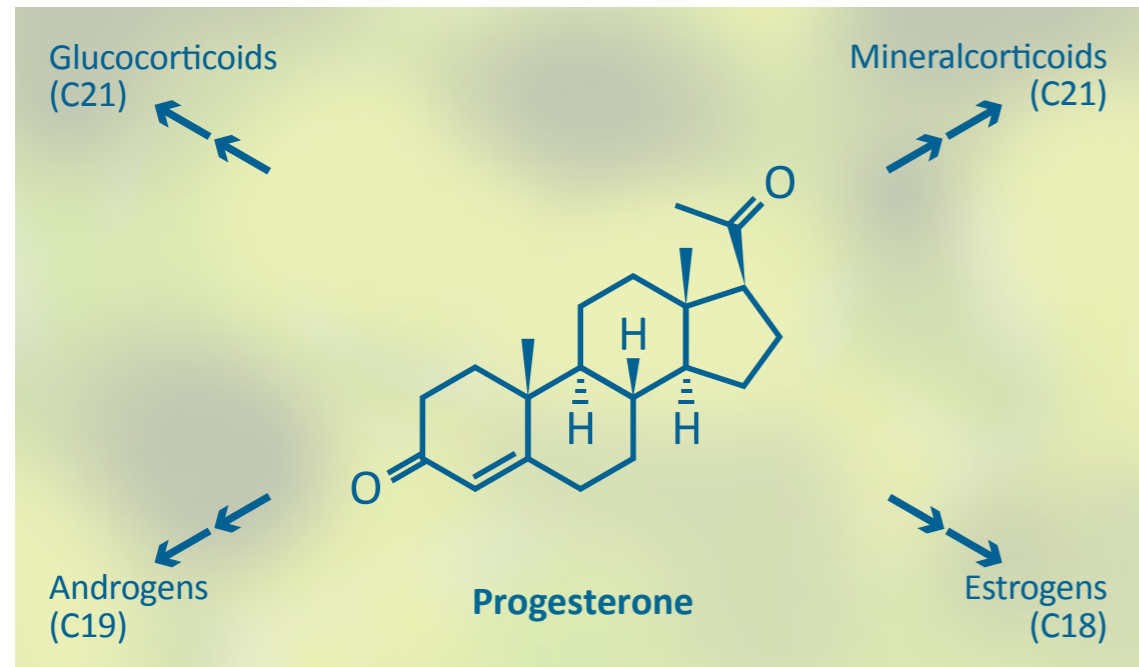




Smart Steroid Profiling



Detection of metabolic disorders

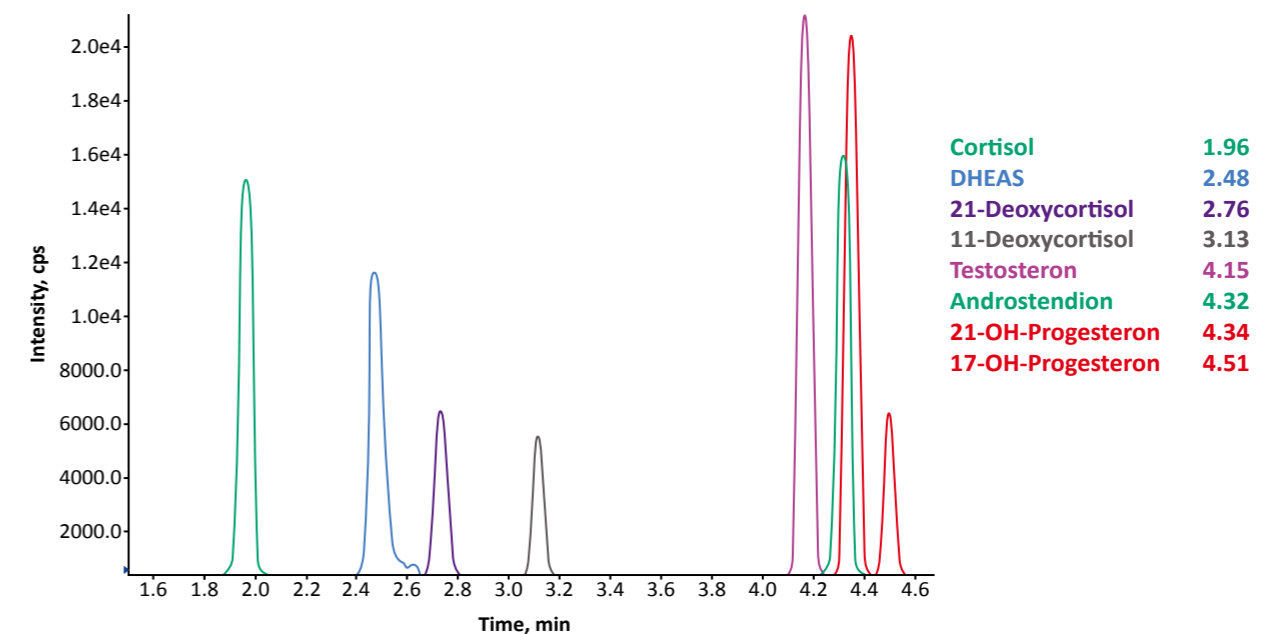


Smart Metabolic Profiling of Steroid Hormones

Steroid hormones are synthesised from cholesterol. The majority of these powerful molecules are produced by the adrenal glands, testes or ovaries. They fulfill a wide range of physiological functions after binding to specific cell receptors of various target organs. Mainly, they are involved in the carbohydrate, lipid and protein metabolism, stress response, regulation of the water and mineral balance, reproductive processes and development of secondary sex characteristics. Consequently, steroid hormones are also involved in a variety of diseases, like adrenal tumors, the Adrenogenital

Syndrome (CAH), the Cushing's Syndrome or the Polycystic Ovarian Syndrome. Synthetic steroids are used in medical treatment of acute and chronic diseases, e.g. gonadal dysfunction, allergies and suppression of immune responses. Quantitative profiling of steroids is essential in diagnosis and evaluation of pathologic conditions and therapeutic responses. RECIPE developed a fast and simple quantitative Steroid Profiling LC-MS/MS method that covers the most relevant steroid hormones. Thus, enables the recognition of significant changes of individual steroid profiles.

Chromatogram of the ClinChek® Serum Control Level II (order no. MS12081)



The Analytes and labelled Internal Standards (IS)

- + Cortisol / Cortisol-d4
- + Testosterone / Testosterone-d3
- + Androstenedione / Androstenedione-d7
- + 11-Deoxycortisol / 11-Deoxycortisol-d5
- + 21-Deoxycortisol / 11-Deoxycortisol-d5
- + 17-OH-Progesterone / 17-OH-Progesterone-d8
- + 21-OH-Progesterone / 17-OH-Progesterone-d8
- + DHEAS / DHEAS-d5

Smart Profiling

- + Covers the most recognised steroid metabolites for diagnostic purposes in one kit
- + Suitable for CAH, PCOS and Hypercorticism (Cushing Syndrome) testing
- + All steroid metabolites in a 6 min run
- + Sample preparation in a few minutes

Your choice in HPLC & LC-MS/MS diagnostics

- + Certified and quality approved CE-IVD solutions
- + Unique metabolic profiling of steroid hormones
- + Preferred partner in more than 80 countries



Shimadzu Corporation

www.shimadzu.eu
str. Gh. Ionescu Sisești, nr. 343 A
Sector 1, București
Tel: +4031 620 88 58
office@shimadzu.eu.com



RECIPE Chemicals +
Instruments GmbH

Dessauerstraße 3
80992 München
Tel. +49 89 54 70 81 - 0
Fax. +49 89 54 70 81 - 11
info@recipe.de
www.recipe.de



PROTON IMPEX 2000 SRL

63, Trilului str. 030401 Bucharest
Tel/Fax: +40-21-224 5281
E-mail: office@proton.com.ro
www.proton.com.ro | www.ecografesamsung.ro
www.imagisticamedicala.ro | www.shimadzu-medical.ro